

Product Description

iQuip Timbabuild® FINISH manufactured in UK, is designed to aid the perfect finished surface to Timbabuild repairs. Finish is a 2 Part filler in a patented silicone tube designed to perfectly mix the filler and hardener ratio without effort. Once mixed, this durable filling agent can be applied as a 'top coat' to any Timbabuild repair after sanding to smooth out any imperfections, pin holes or uneven layers.

The mixed product is fast curing (ready to sand in 30 minutes) and sands easily, leaving a primer/ paint ready surface. Finish can also be used independently as a strong durable stainable two part wood filler without the need for primers, for small repairs. Finish is a styrene free wood filler and is safely used indoors without harmful odours. FINISH is coatable with most decorative wood finishes.

This product has an 18 month shelf life.

Key Features

- Styrene Free - Less harmful and VOC A+ rated.
- Use with a standard silicone tool.
- Cartridge System Ensures Accurate Mixing.
- Hardener & Resin is extruded together in the correct ratio.
- Fast and Simple to Use, Easy to Clean and Store.
- High strength and durability 2 Part wood filler
- Cured and ready for painting within 30 minutes (at 20°C).
- Re-usable cartridge system.
- Easy to mix and apply with a decorators knife.
- Natural finish can be stained, varnished or over painted.



Rapid Curing

2 Part Filler

Available Sizes

300g Nylon Cartridge
Packed 15 x 300g per carton outer

Conforms to
ISO 9001 & 14001


Typical Hardening Time*

Gelling Time (mins)			Curing Time (mins)		
Temperature (°C)			Temperature (°C)		
5	15	25	5	15	25
10	5	2	35	22	13

Wood may absorb a stain differently to the filler.
We would always advise use of a test panel when working with stains and varnishes.

Typical Physical Property

EHB60 Professional	STORAGE / SHELF LIFE	IMPORTANT
APPEARANCE - NATURAL FINISH COMPRESSIVE STRENGTH - 43.18 N/mm2 TENSILE STRENGTH - 9.74 N/mm2 FLEXURAL STRENGTH - 13.97 N/mm2	This product should be stored between +5°C & +25°C and away from direct sunlight. The Shelf life of the product is 18 months from the manufacture date.	The information and data given is based on our own experience, research and testing and is believed to be reliable and accurate. However, as Chemfix Products cannot know the varied uses to which its products may be applied, or the methods of application used, no warranty as to the fitness or suitability of its products is given or implied. It is the users responsibility to determine suitability of use. For further information please contact our Technical Department.

Product Code	Description	Carton Quantity	Scannable Barcode
38FIN300	iQuip Timbabuild Finish 300g	15	

Preparation & Mixing

Prior to application, all surfaces should be clean and sound. When applying over Timbabuild repairs, ensure that these repairs have been cleaned of surface dust.

- 1) Mount the cartridge into the extrusion tool. REMOVE THE CAP AND THE PLUG. The plug may be discarded. Squeeze out the required volume of material onto a suitable mixing board. On the first extrusion EXTRUDE FIRST 10ml OF MATERIAL TO WASTE.
- 2) Mix with a spatula or knife until a smooth, even coloured, streakfree mix is obtained.
- 3) Ensure that the filler is scraped clear of the board and spatula at least once during mixing. This ensures that both base and activator are thoroughly mixed together and no unmixed material will be used.

Application

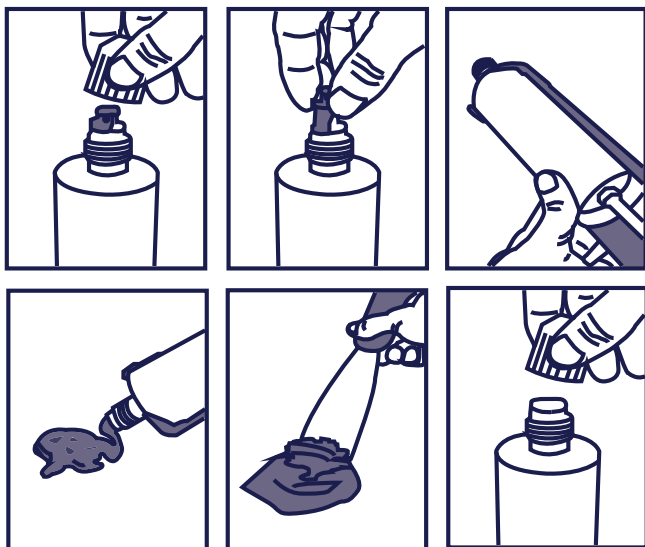
- 1) Spread a small amount of FINISH Professional using a spatula, knife or similar tool onto the repair area, leaving slightly proud for sanding down.
- 2) Following the cure time, sand using a fine grit sand paper and follow the normal procedure for painting the surface.
- 3) The cap may be replaced (without the plug) onto the cartridge and the product used again.
Refer to the Timbabuild® Repair Guide for further information.

Professional Silicone Tool

For the best results when extruding this product, always use the iQuip Drip Free Caulking Gun. This tool benefits from a smooth and comfortable trigger action, geared for smooth and controlled use in all environments, a tension plate for vibration reduction, and a high tensile grade steel coating to avoid corrosion.



iQuip Drip Free Caulking Gun



Health & Safety

Timbabuild® FINISH is classified with "Warning". Ensure protective clothing is worn during use. If material comes into contact with the skin wash off with plenty of soap and water. If irritation persists or a rash appears seek medical advice.

For further information refer to the Material Safety Data Sheet.

